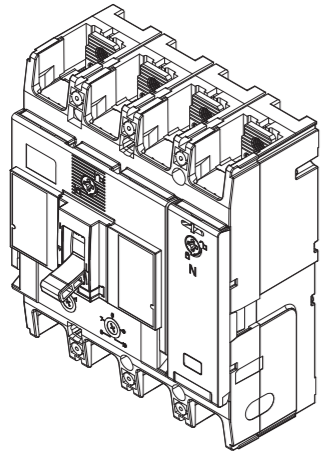




INSTALLATION INSTRUCTIONS MOULDED CASE CIRCUIT BREAKERS TEMBREAK PRO P250 4P THERMAL MAGNETIC



SCAN ME

NHP Electrical Engineering Products Pty Ltd
A.B.N. 84 004 304 812

AUS 1300 NHP NHP | nhp.com.au
NZ 0800 NHP NHP | nhp-nz.com

TOOLS REQUIRED (NOT included)

- T1 Screwdriver Flathead (5mm)
- T2 Screwdriver Phillips (#2)
- T3 17mm Socket wrench
- T4 6mm Allen key Socket wrench
- T5 17mm Ring Spanner

HARDWARE (included)

- A M8x20 Socket screw (8 qty)
- B M8 spring washer (8 qty)
- C M8 flat washer (8 qty)
- D M4x55 mounting screws (2 qty)
- E Interpole Barriers (3 qty)
- Instruction Manual (This Document) (1 qty)

HARDWARE (NOT included)

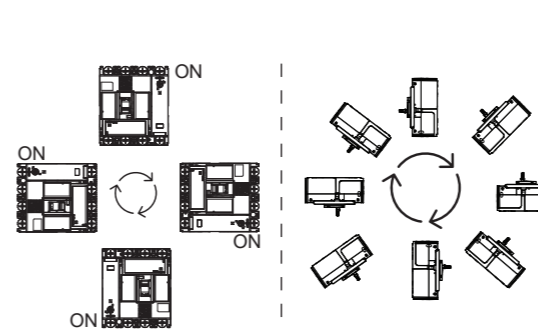
- F Lugs or Copper Bars
- G *M10x25 hex bolt (8 qty)
- H *M10 flat washer (8 qty)
- I *M10 Belleville washer (8 qty)
- J *M10 nut (8 qty)

*For extension bar connection only

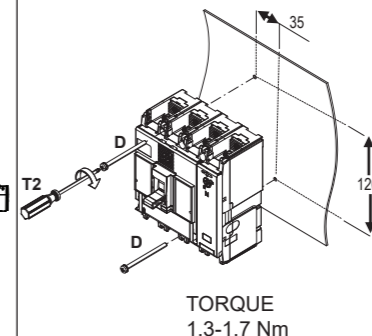
OPTIONAL (NOT included)

- K Extension Bars
- L Terminal Covers
- M Terminal Cover Lock
- N Handle Lock
- Internal Accessories

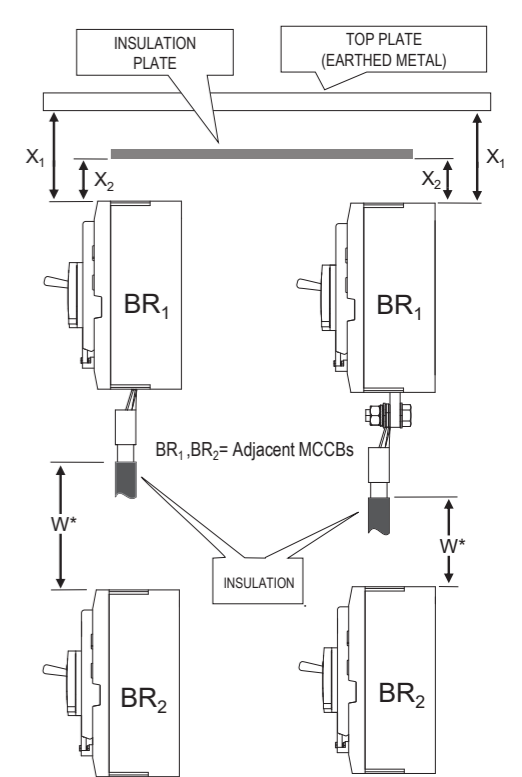
MOUNTING ANGLES



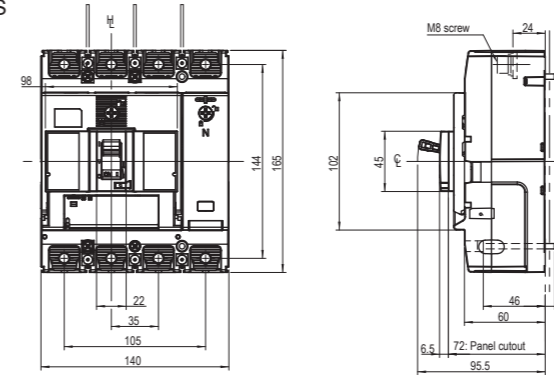
MOUNTING



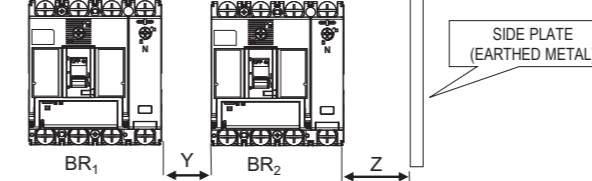
CLEARANCE



DIMENSIONS



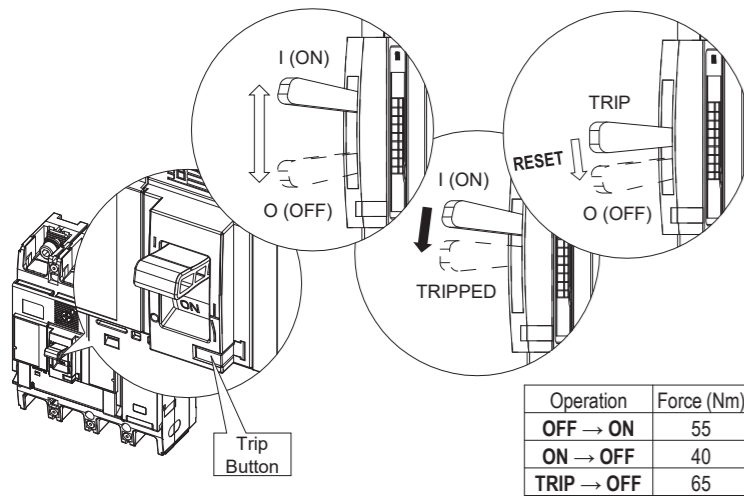
CLEARANCE



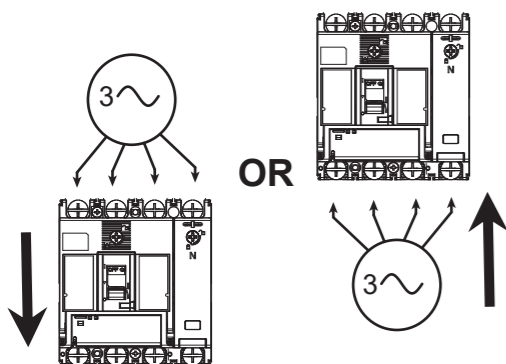
MCCB Cat No.	Y min (mm)	Z min (mm)
P250F	0	25
P250N	0	25
P250H	0	25

MCCB Cat No.	W* min (mm)	X ₁ min (mm)	X ₂ min (mm)
P250F	50	40	30
P250N	80	80	30
P250H	80	80	30

OPERATING INSTRUCTIONS

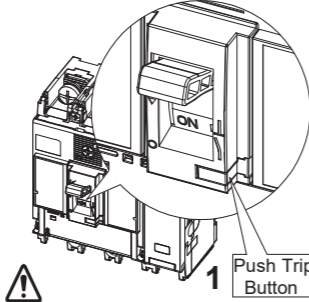


DIRECTION OF POWER SUPPLY

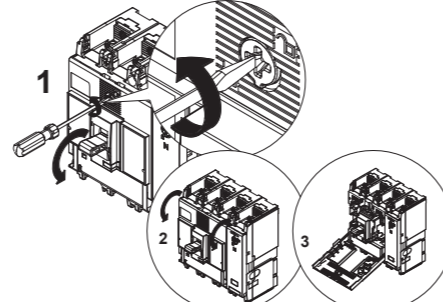


INTERNAL ACCESSORIES ASSEMBLY PROCEDURE*

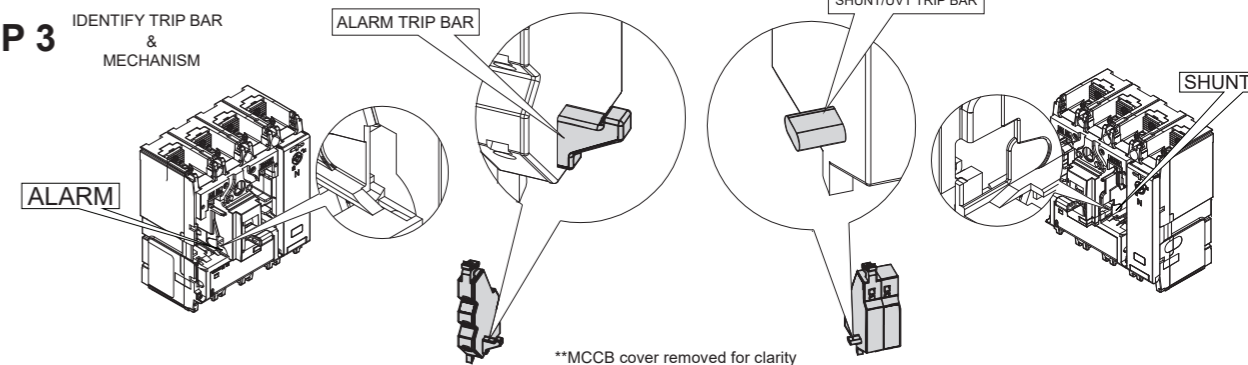
STEP 1 TRIP MCCB



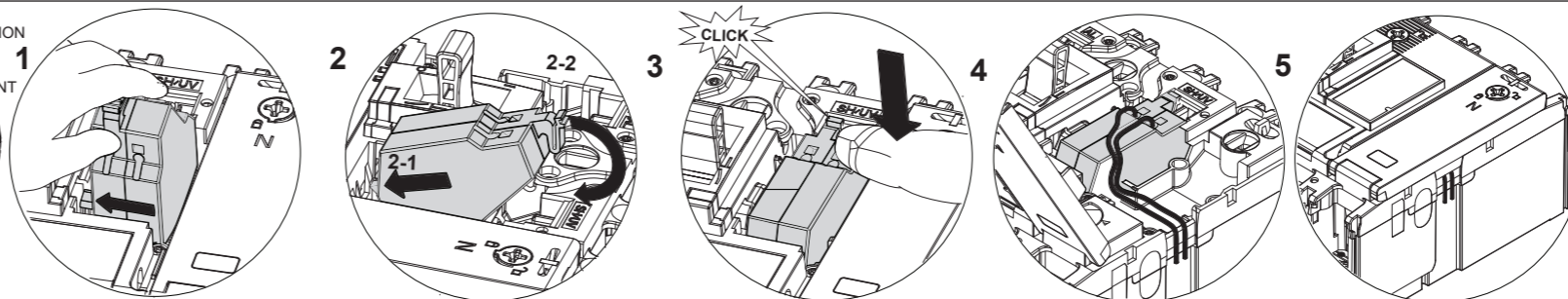
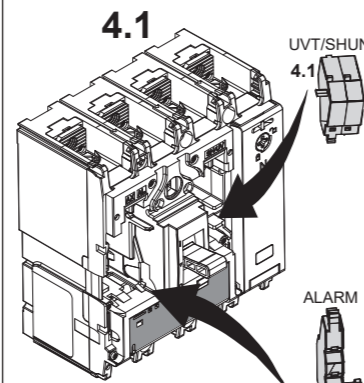
STEP 2 OPEN COVER



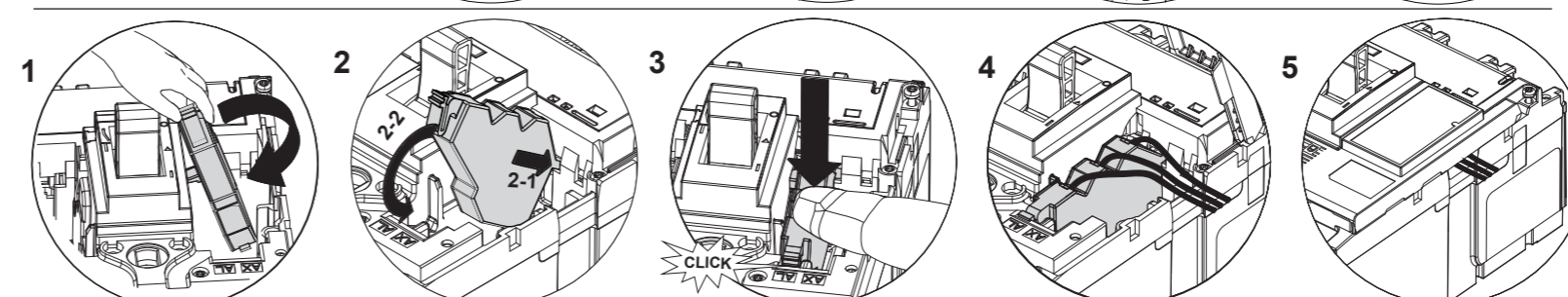
STEP 3 IDENTIFY TRIP BAR & MECHANISM



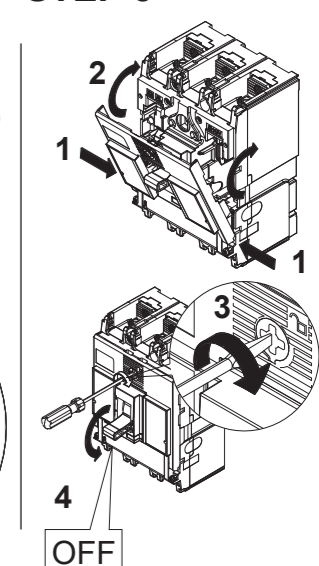
STEP 4.1 UVT/SHUNT INSTALLATION



STEP 4.2 ALARM INSTALLATION

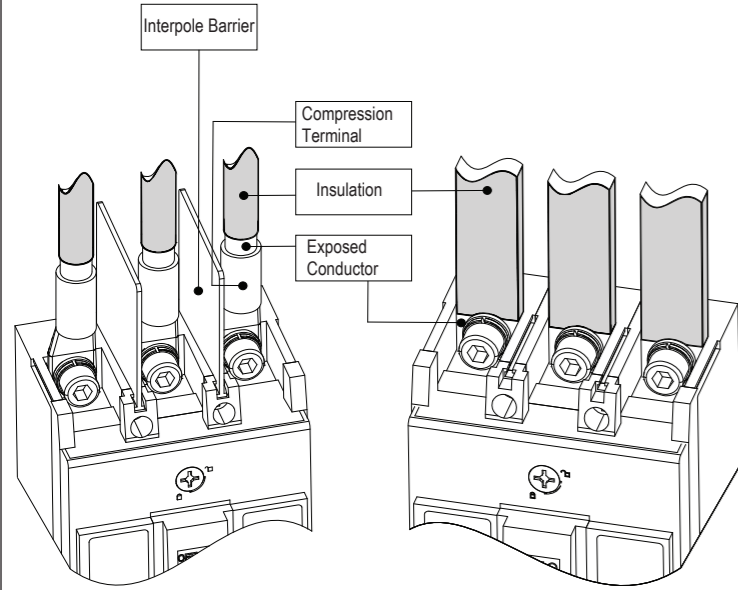


STEP 5 CLOSE MCCB COVER

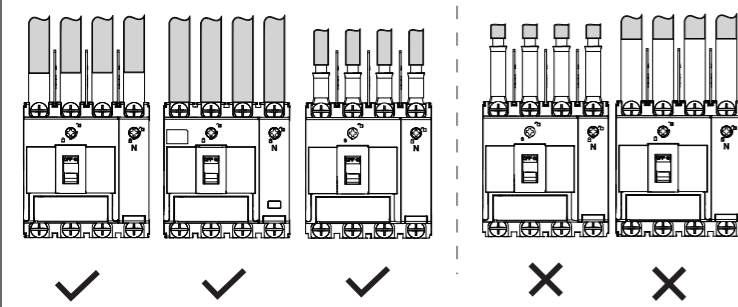


*For additional internal accessory installations, scan QR code and refer to user manual for more details

TOPSIDE INSULATION RECOMMENDATIONS – 415 / 440V AC

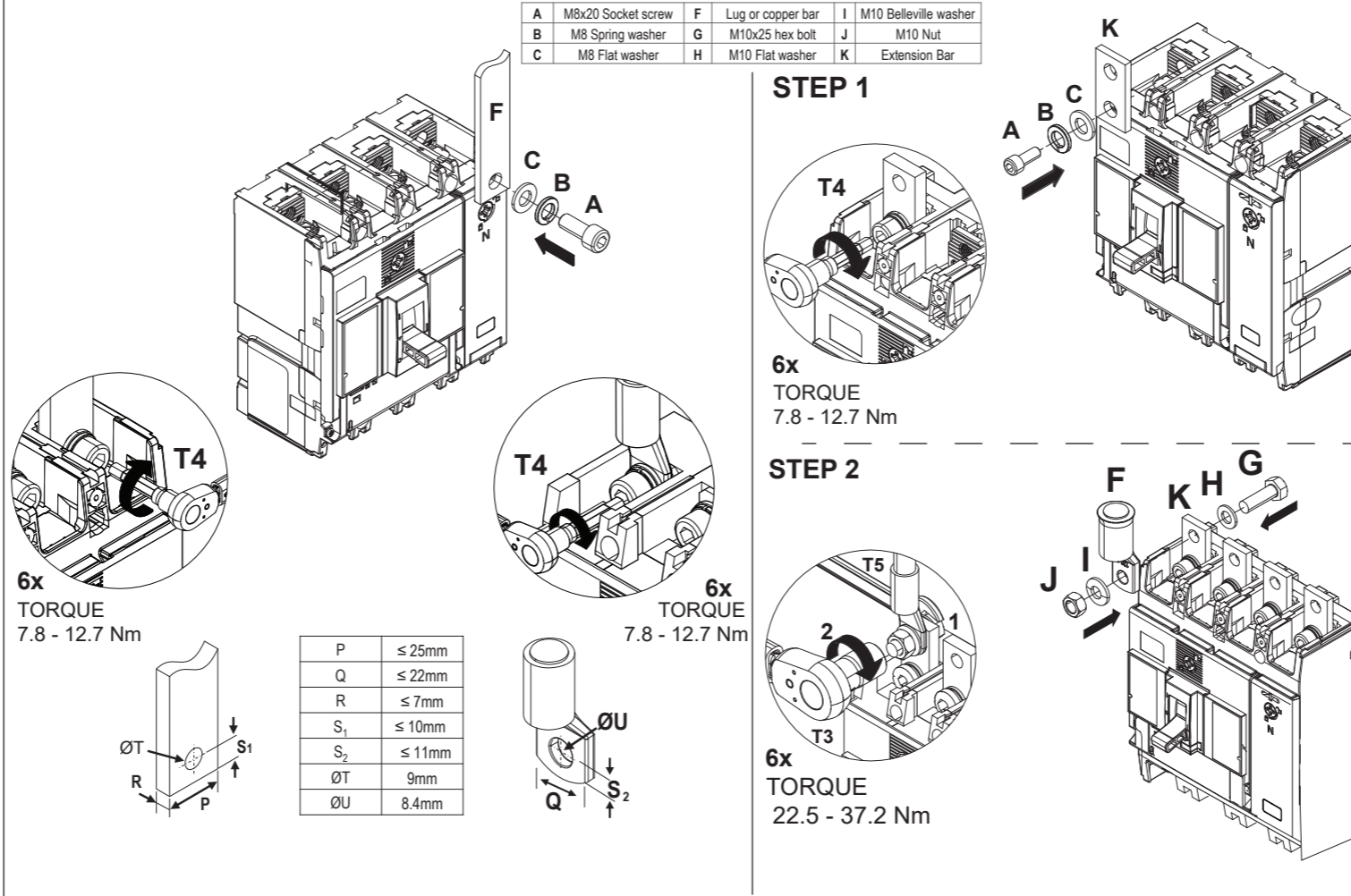


NOTE: Insulate the exposed conductor to achieve IP2X or protect from finger access.

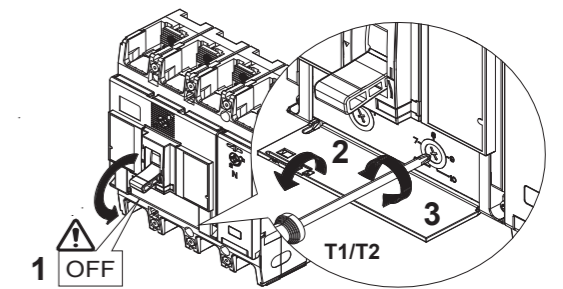


CONDUCTOR CONNECTION PROCEDURE -- FRONT CONNECTION

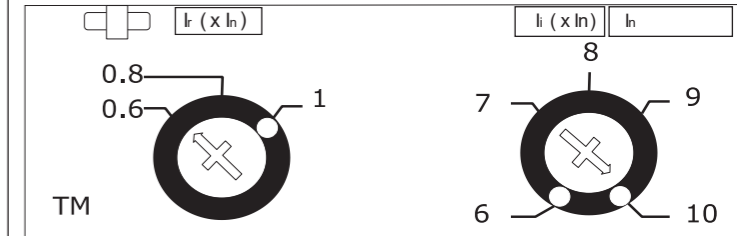
A	M8x20 Socket screw	F	Lug or copper bar	I	M10 Belleville washer
B	M8 Spring washer	G	M10x25 hex bolt	J	M10 Nut
C	M8 Flat washer	H	M10 Flat washer	K	Extension Bar



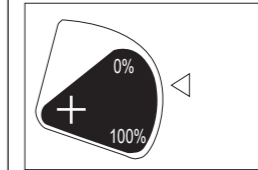
TRIP UNIT ADJUSTMENT PROCEDURE



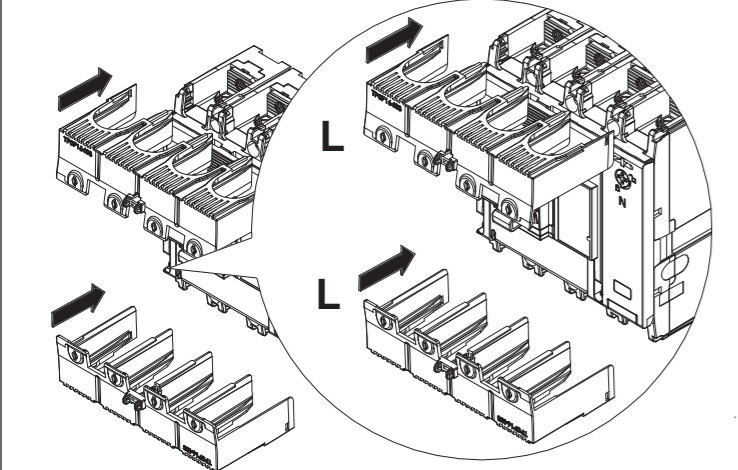
I_n (A)	I_r (A)	I_i (A)
50, 63, 100, 125, 160	0.63 - 1.0	6 - 8 - 10 - 13
200	0.63 - 1.0	6 - 8 - 10 - 12
250	0.63 - 1.0	6 - 7 - 8 - 9 - 10



A selector switch is provided in the N-pole which allows the Thermal Long Time Delay to be switched OFF or ON. N-pole instantaneous (Ii) tripping will remain ON at all times.

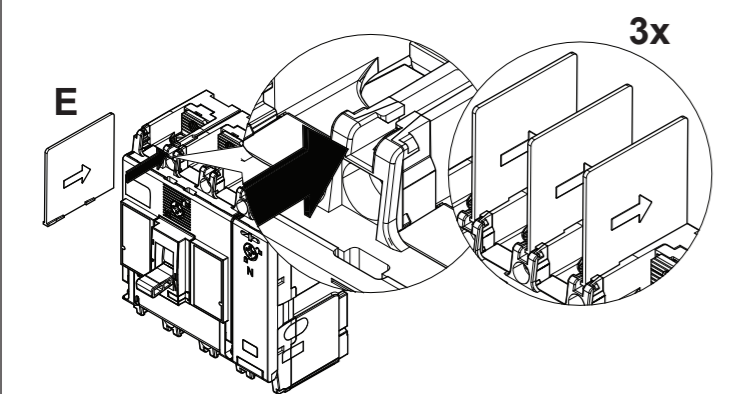


TERMINAL COVER

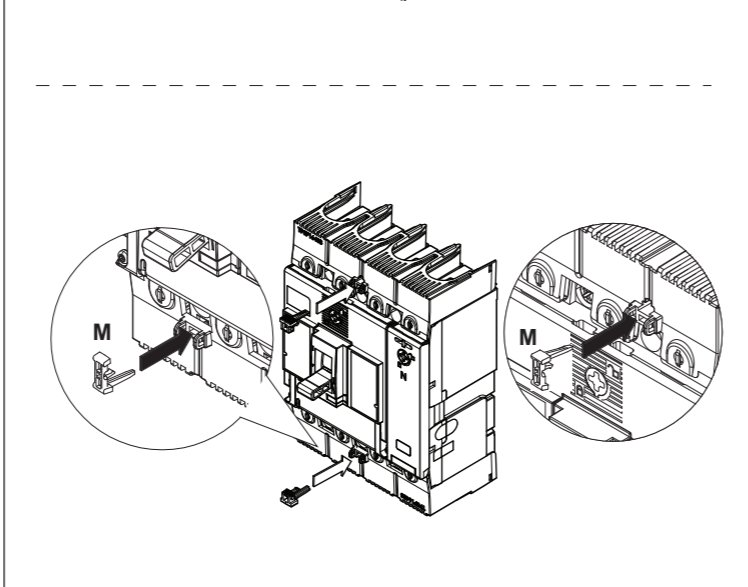
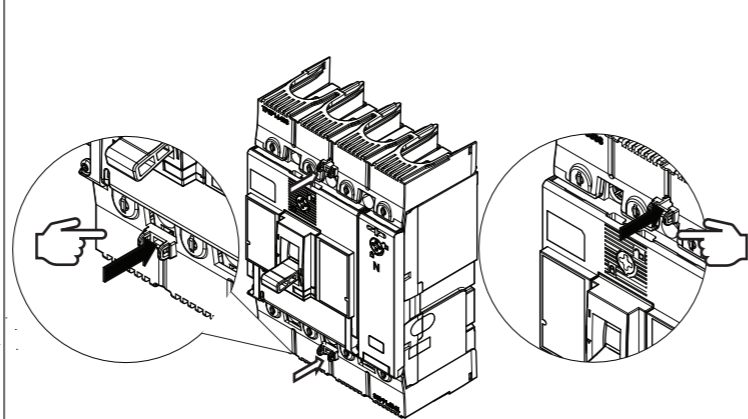


OR

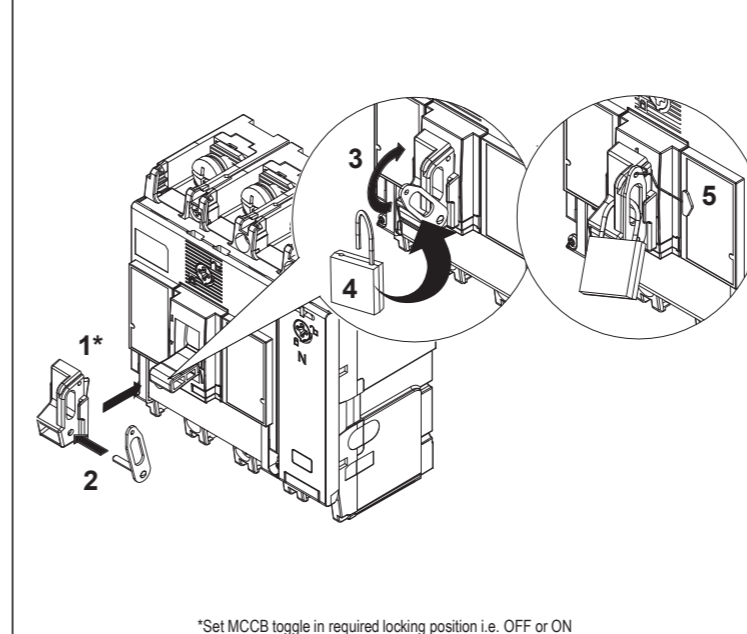
INTERPOLE BARRIER



TERMINAL COVER LOCK

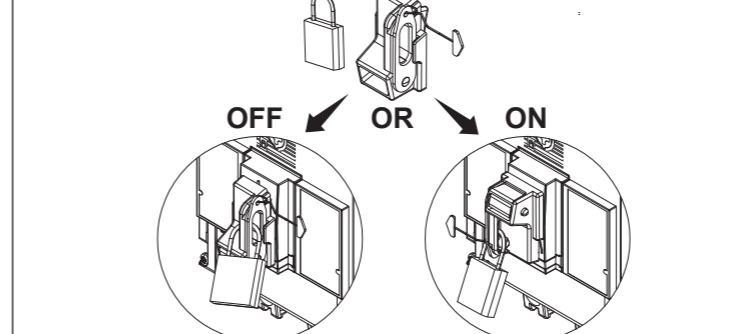


TOGGLE LOCK / PADLOCK ASSEMBLY PROCEDURE



*Set MCCB toggle in required locking position i.e. OFF or ON

TOGGLE LOCK OPTION



TIME CURRENT CHARACTERISTIC CURVE

