

1492PD4G

Allen-Bradley 1492-P Push-in Terminal 4mm 2 Level 4
Conductor Entries Green



Allen-Bradley

by ROCKWELL AUTOMATION

TERMINALS



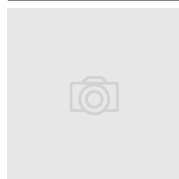
Component type	Feed-through terminal block
Range	1492P
Model	N/A
Product status	New Item

The Allen-Bradley 1492-P range of Push-in Terminal Blocks are reliable, safe and straightforward electrical connections designed for advanced wiring management. With cross-sectional wire sizes from 1.5mm² to 16mm² and fitted with various terminal types such as feed-through, disconnect, fused and plug-in terminals and available in both single and multi-level housing make them ideal for various panel space requirements. Available with a wide range of accessories enabling quick and easy installation.

ELECTRICAL	Type of electrical connection 1	Push-in clamp connection
	Rated current In	32 A
	Rated voltage	800 V
CONSTRUCTION	Number of levels	2
	Number of clamp positions per level	2
	Colour	Green
	Mounting method	DIN rail (top hat rail) 35 mm
	Inflammability class of insulation material according to with UL94	V0
	Internally connected stages	Yes
DIMENSIONS	Width	6.1 mm
	Height	53.5 mm
	Depth	100 mm
ENVIRONMENT	Operating temperature	-60...130 °C

RELATED PRODUCTS

ACCESSORY



Item No: 1492CJP410

Required: No

Description: Allen-Bradley 1492-P Centre Jumper Orange 10 Pole for 4mm Push-in Terminal



Item No: 1492CJP42

Required: No

Description: Allen-Bradley 1492-P Centre Jumper Orange 2 Pole for 4mm Push-in Terminal

1492PD4G

Allen-Bradley 1492-P Push-in Terminal 4mm 2 Level 4
Conductor Entries Green



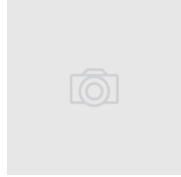
Allen-Bradley

by ROCKWELL AUTOMATION

TERMINALS

RELATED PRODUCTS

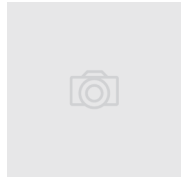
ACCESSORY



Item No: 1492CJP43

Required: No

Description: Allen-Bradley 1492-P Centre Jumper Orange 3 Pole for 4mm Push-in Terminal



Item No: 1492CJP44

Required: No

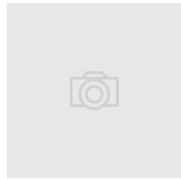
Description: Allen-Bradley 1492-P Centre Jumper Orange 4 Pole for 4mm Push-in Terminal



Item No: 1492CJP45

Required: No

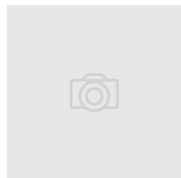
Description: Allen-Bradley 1492-P Centre Jumper Orange 5 Pole for 4mm Push-in Terminal



Item No: 1492CJP450

Required: No

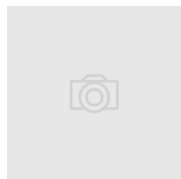
Description: Allen-Bradley 1492-P Centre Jumper Orange 50 Pole for 4mm Push-in Terminal



Item No: 1492DR5

Required: No

Description: Allen-Bradley 1492 DIN Rail 35 x 7.5mm Copper Free Aluminium 1m



Item No: 1492EAHJ35

Required: No

Description: Allen-Bradley 1492-J Heavy Duty End Anchor for 1492 J



Item No: 1492EAJ35

Required: No

Description: Allen-Bradley 1492-J End Anchor for 1492 J



Item No: 1492EAP35

Required: No

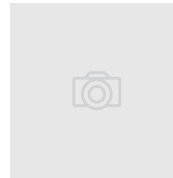
Description: Allen-Bradley 1492-P End Anchor Screw Standard Duty Grey



Item No: 1492EBPD4

Required: No

Description: Allen-Bradley 1492-P End Plate Grey for Push In Terminal 1492PD4



Item No: 1492EBPD4B

Required: No

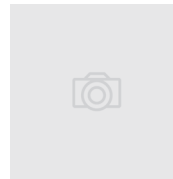
Description: Allen-Bradley 1492-P End Plate Blue for Push-in Terminal 1492PD4



Item No: 1492ERL35

Required: No

Description: Allen-Bradley 1492 End Anchor



Item No: 1492MT6X8

Required: No

Description: Allen-Bradley 1492-M Marker Card Snap In 6 x 8mm 600 Markers Per Roll



Item No: 1492P4TPE

Required: No

Description: Allen-Bradley 1492-P Flexible Test Plug Accessory End Test Plug for 4mm Terminal Black



Item No: 1492PTPS

Required: No

Description: Allen-Bradley 1492-P Flexible Test Plug Accessory Start Test Plug Black